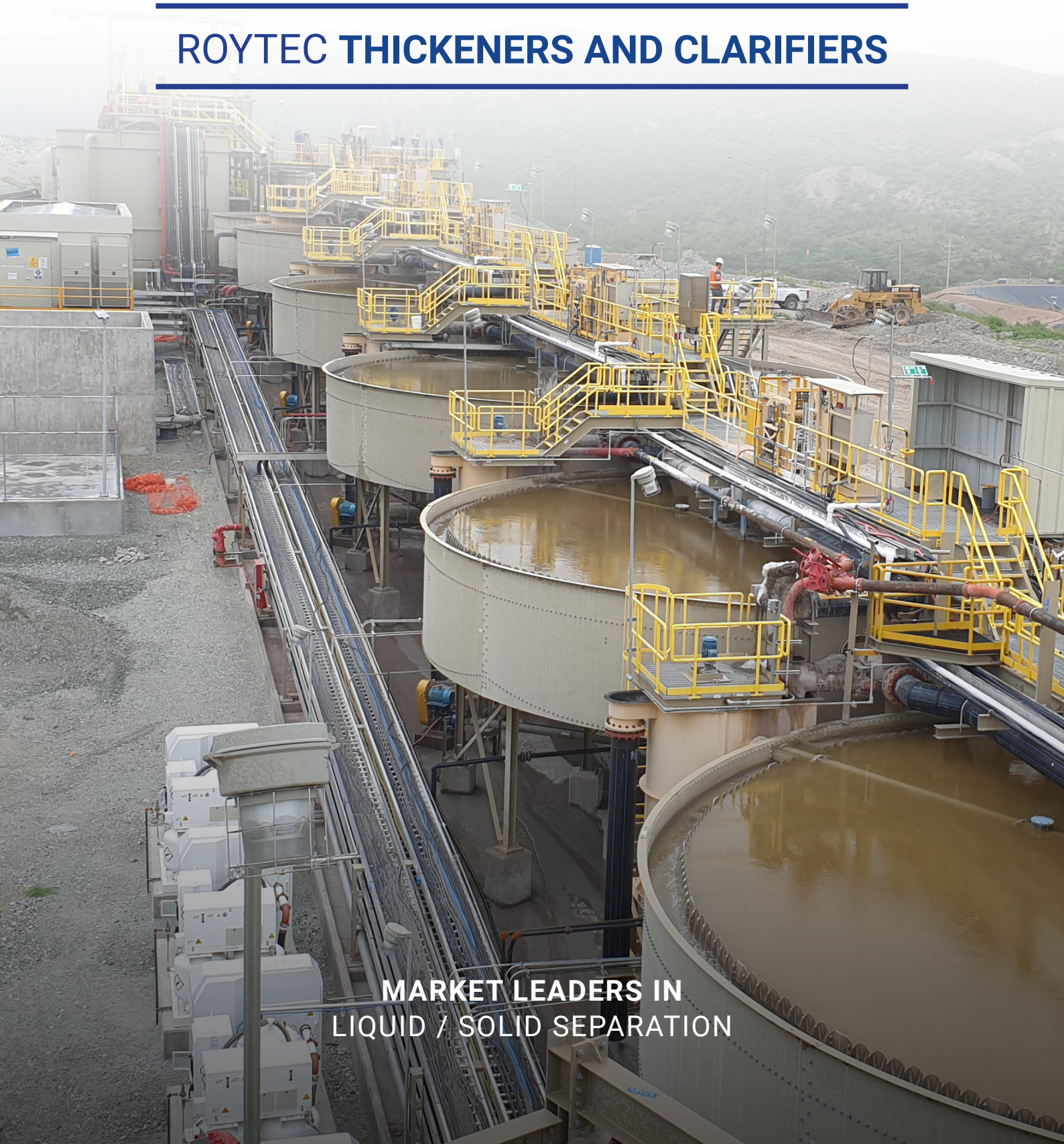




ROYTEC
Filtration & Separation Solutions

ROYTEC THICKENERS AND CLARIFIERS



**MARKET LEADERS IN
LIQUID / SOLID SEPARATION**

ROYTEC THICKENERS AND CLARIFIERS

ROYTEC GLOBAL is an International Company specializing in Liquid / Solid and mineral Separation technologies for the Mining and Industrial sectors.

Roytec is privately owned by Directors and Managers. We are passionate about excellence in our services and we pride ourselves in delivery to our promises. Our equipment is fully supported by Roytec Specialists based in Johannesburg, South Africa; Perth, Australia; Toronto, Canada; and Yantai, China.

ROYTEC THICKENERS

Roytec have advanced the development of our Thickeners and Clarifiers to exceed the demands of the modern process plant, in keeping with our goals of reducing overall cost of ownership through technology. Our Thickener and Clarifier product range has been tailored to the specific duty requirements of the mining and metallurgical industries.



Robust, reliable and efficient is the best way to describe the Roytec range of Thickeners - exactly what any operating plant needs.

Thickener units are available up to 90m diameter with a range of sidewall and centre pier mounted bridge designs, electric and hydraulic drives and fully integrated lift and automated control systems. Tanks are available in site bolted, site welded and concrete designs.

The Roytec range of Thickeners are designed to operate under the most arduous plant conditions.

To achieve best performance and efficiency for our clients, the Roytec **NexGen™** Thickener programme has been developed to improve Thickener operation, reduce flocculant usage, achieve high underflow densities, improve overflow quality and allow for high levels of automation; all in keeping with best modern processing practises.

Key advances from the Roytec **NexGen™** programme are the revolutionary **RADFLOW™** feedwell and the **ETAQ™** feed dilution pump system.



TAILORED THICKENING SOLUTIONS

Roytec has a wealth of thickening application knowledge and we partner with clients to ensure the best fit solution.

We specialise in the following Thickener technology;

- High Rate
- Conventional
- High Density / Paste
- Deep cone (raked and unraked)
- Pin Bed and Dynamic Bed Clarifiers
- Underground Settlers

We use a combination of design approaches including first principles and an in-house developed iteration design program to arrive at the optimum design configuration for the Thickener unit.

Tank design uses 3D dynamic models and follows the SANS / API and other best practice international codes.

The use of 3D dynamic models ensures integrated design.



COUNTER-CURRENT THICKENER CIRCUITS

Roytec Thickeners are used extensively in CCD applications. Soluble metal recovery is maximised with a combination of highly effective inter-stage mixing, feed dilution, underflow density optimisation and circuit control.

Our designs incorporate combined inter-stage mixer / pump units, allowing all CCD stages to be installed at same elevation with the resulting significant decrease in civil and installation costs.

We have experience in acid and alkaline circuits for the recovery of copper, cobalt, uranium and gold.

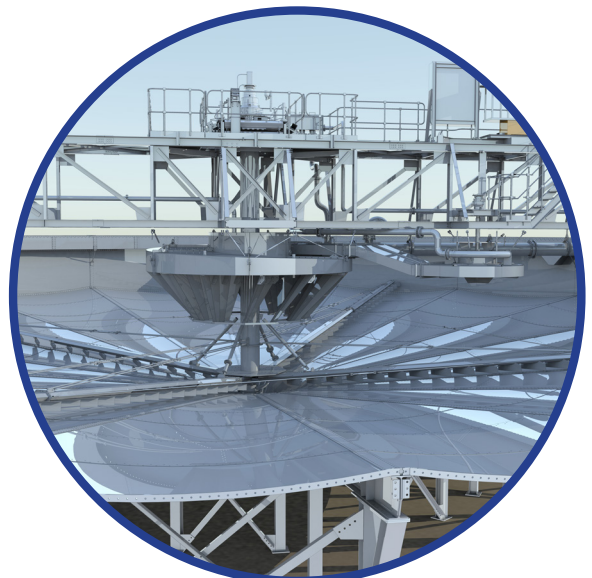


RAKE DRIVES & RAKING MECHANISMS

Drive heads and raking mechanisms are supported either by a full span or half span bridge arrangement. For larger diameter units (+45m), the mechanism is usually supported off a centre column.

Drive units are either hydraulic or electric and include a full regime of instrumentation to ensure drive train protection and plant safety. Fully automated rake lift and lower is standard on Roytec Thickeners.

The principle behind our drive train design is for all gears and bearings to have an operating life in excess of 100,000 hours. All mechanical components are European brands, which are well supported and serviced on all continents.



PACKAGE CAPABILITIES

Roytec can offer Package Plants for our client's thickening and filtration needs.

Our in-house engineers cover all disciplines to deliver packaged solutions including;

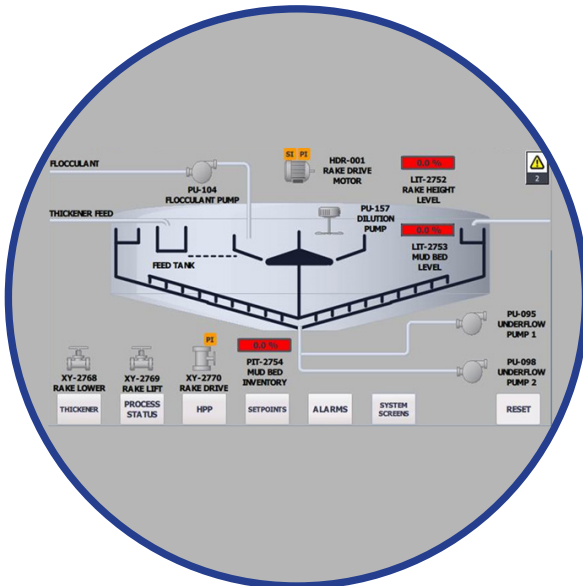
- Flocculant make-up stations
- Underflow pumping and storage for filtration
- Underflow filtration options with pressure or vacuum
- All ancillary requirements – civils / piping / power etc.
- Automation of the complete package



CONTROL

A fully instrumented and integrated control system allowing plant feed-back for continuous monitoring and optimum operation, comprises:

- Rake torque level monitoring.
- Automatic rake lifting and lowering.
- Rake position indication.
- Mud bed level indication.
- Feed density and flow monitoring.
- Underflow density and flow monitoring.
- Overflow turbidity measurement.
- Bed pressure measurement.
- Feedwell settling rate monitoring.
- Flocculant dosing rate control.
- Visual and audible alarming.
- System temperature and oil level measurement.



ROYTEC'S MODULAR BOLTED TANKS

Roytec supplies a bolted construction / segmented steel tank concept for our Thickeners, with significant advantages over site welded tanks:

Elimination of all on-site welding.

Reduced erection crew and minimal skill requirement (typically bolted tanks are installed in a third of the time it would require to install a welded tank).

Shop tested / assembled prior to delivery.

Durable, reliable and well proven in service.

Ideal for modular plant designs and equipment relocation plans.



RADFLOW™ FEEDWELLS



ROYTEC

Global Separation Solutions

Johannesburg | Perth | Toronto | Yantai

Other ROYTEC equipment

- Vacuum Belt Filters & Vacuum Disc Filters
- Dynamic Bed & Pin Bed Clarifiers
- BGRIMM Flotation Cells, Magnetic Separators and Attritioning Mills
- Filter Presses
- Ceramic Disc Filters
- Dual Media Filters
- Ion Exchange Systems
- Flocculant/Coagulant Preparation and Dosing Plants
- Linear Screens



South Africa

- 3 Angus Crescent, Longmeadow Business Estate East, Modderfontein, South Africa, 1609
- Tel: +27 (0) 11 608 0000
- Email: sales@roytecglobal.com

Australia

- Level 2, 267 St Georges Terrace, Perth, WA6000
- Service Centre: Unit 2/5 Quantum Link, Wangara, WA 6065
- Tel: +61 (0) 427 732 243
- Email: sales.au@roytecglobal.com

Canada

- Suite 703, 45 Sheppard Avenue East, Toronto, Ontario, Canada, M2N 5W9
- Tel: +1 647 477 0422
- Email: sales.ca@roytecglobal.com

www.roytecglobal.com