

# COMPANY PROFILE



Roytec Global is an international company specializing in liquid / solid and mineral separation technologies for the Mining and Industrial sectors. We are **LEADERS** in thickening, filtration and mineral flotation technologies for the mining industry.

Roytec is privately owned by our Directors and Managers ensuring accountability and we are **PASSIONATE ABOUT EXCELLENCE IN OUR SERVICES** and we **pride ourselves in delivering to our promises.**

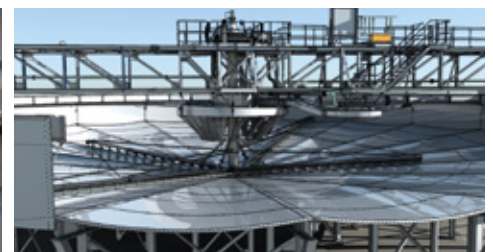
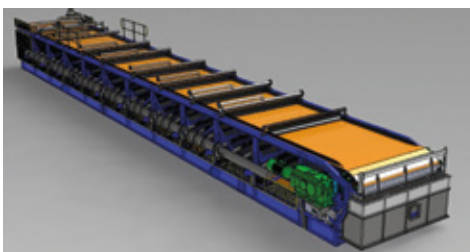
We offer two main categories of mineral processing equipment and all of our equipment is fully backed-up and serviced by Roytec **SPECIALISTS** based in Johannesburg, South Africa; Perth, Australia; Toronto, Canada; and Yantai, China.

- **Proprietary Equipment** lines in Thickeners using RadFlow Feedwell Technology; Dynamic Bed and Pin Bed Clarifiers; Linear Screens; Ion Exchange Systems; Flocculant/Coagulant Preparation and Dosing Plants.
- **Partnered Equipment** options in BGRIMM Flotation Cells, Magnetic Separators and Attritioning Mills; Vacuum Belt Filters & Vacuum Disc Filters; Filter Presses & Tower Presses; Dual Media Filters; Ceramic Disc Filters.

#### Our Services include:

- **Test Work:** Both laboratory and pilot plant facilities for equipment selection & sizing.
- **Process Specification:** Flow sheet development and process performance guarantees.
- **Pricing:** Scoping studies through to DFS and execution stage.
- **Design & Execution:** Designs to SANS4 / AS / CAS & other internationally recognized standards, and execution by experienced contract managers under close supervision of our Directors.
- **Erection and Commissioning Services:** We have a team of experienced site erection & commissioning supervisors who take projects through to client hand-over.
- **Training and Optimization:** We only leave site when the Roytec equipment is fully optimized into the plant performance and the client is adequately trained in operation & maintenance.
- **Aftermarket Support / Spares & Services:** We stock a full range of spare parts at all our locations and our service engineers offer site visits, planned maintenance and comprehensive service level agreements.

Roytec Directors, Managers and Engineers are available for site visits, planned maintenance and advice 24 hours a day



# COMPANY PROFILE



## THICKENERS

This proprietary technology covers conventional, high rate, high density and paste thickening. We are well known for CCD circuits, with extensive experience in gold, copper and uranium for both acid and alkaline conditions. Roytec's revolutionary RadFlow™ Feed well was developed in conjunction with a leading PhD in fluid dynamics and is now well recognized to significantly improve thickener and clarifier operation through efficient energy dissipation and flow distribution.



## FLOTATION & MAGNETIC SEPARATION WITH BGRIMM

Roytec has a long-term support agreement with the Beijing General Research Institute for Mining & Metallurgy (BGRIMM) covering their flotation, regrind, attrition and Magnetic Separation technology. BGRIMM is Asia's leading mineral flotation supplier with over 20,000 cells in the field. In Southern Africa, BGRIMM references include multiple 320m<sup>3</sup> cells for a major copper project and +50 cells for the latest graphite and fluorspar concentrators.



## PIN BED & DYNAMIC BED CLARIFIERS

Roytec is well known for our effective Pin Bed and Dynamic Bed Clarifier designs. We have developed a unique feed pre-treatment technique, using inorganic additives and from major plant treating 5000m<sup>3</sup>/h of SX feed solution to small plant water clarifiers - product of less than 20mg/l total suspended solids is commonly achieved.



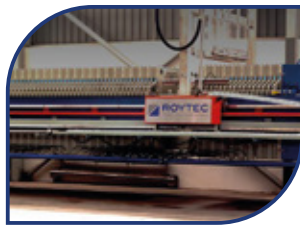
## VACUUM BELT FILTERS

Roytec has in-house Belt Filter expertise and we partner with Nuclear Industries Yantai Toncin for fabrication of Belt Filters up to 200m<sup>2</sup>. While major components are imported from China, all mechanicals (motors gearboxes, hydraulics, instruments etc.) are specified for well-established International service & repair.



## TOWER PRESS FILTERS

With the same partners (Toncin) we offer the Roytec Toncin Tower Press up to 168m<sup>2</sup> effective area. Toncin are Asia's leading Tower Press supplier with 250 units in the field and a strong reputation for operability, ease of maintenance and great value for money. We are very active in supply of components and complete plate packs for other Tower Press brands in Australia, South Africa and South America.



## FILTER PRESSES

Roytec Global in conjunction with the JWK LTD (China) as well as MATEC (Italy) offer the most comprehensive Filter Press product range in the market. Recessed, Membrane or plate and frame plate design, the Roytec offering will be robust, efficient and excellent value. Sizes from 400mm to 2500x2600mm having 1800m<sup>2</sup> filter area. Designs include Side-bar, Overhead Beam. Pressure filtration up to 30 bar. Automated plate-shifting cloth-washers and rapid cake discharge. Rapid plate opening and Bomb-bay drip collection.



## MULTI-MEDIA SX FILTERS

The Roytec Spintek SX Filter is in a class of its own and is the go-to technology for all leading SX Operations. Incredibly low specification of suspended solids and organic entrainment (<5ppm) are common for this specialized filter.



## DISC FILTERS

Our German principle BOKELA, is world famous for highly effective disc filter design. Roytec Bokela offer Vacuum Disc filters (with a major retrofit of a competitor's filters underway in South Africa) and Pressure Disc (hyperbaric) filters. Technology using steam pressure is unique to Bokela and offers a high-tech option for reducing cake moisture on very fine materials.

*Other Equipment available from Roytec includes Belt Presses, Reagent Plants, Ion Exchange, Linear Screens & Magnetic Separators.*

### South Africa

- 3 Angus Crescent, Longmeadow Business Estate East Modderfontein, South Africa, 1609
- Tel: +27 (0) 11 608 0000
- Email: sales@roytecglobal.com

### Australia

- Ground Floor, 849 Wellington Str, West Perth, WA6005
- Tel: +61 (0) 427 732 243
- Email: sales.au@roytecglobal.com

### Canada

- Suite 703, 45 Sheppard Avenue East, Toronto, Ontario, Canada, M2N 5W9
- Tel: +1 647 477 0422
- Email: sales.ca@roytecglobal.com

### China

- Qingdao Roytec Equipment Technology Co. Ltd Suite 8049, No. 18 Baoding Road, Nanshan District Qingdao, Shandong Province, China, 266071
- Tel: +86 159 5359 6399
- Email: sales@roytecglobal.com